



Let the mind manage the body
Que l'esprit gère le corps

HISTORY & GEOGRAPHY

(Subject code No. P142/3)

Index Number:

MAURITIUS EXAMINATIONS SYNDICATE
Primary School Achievement Certificate Assessment
Grade 6
2023
Time: 1 hour 45 minutes Total Marks: 100

INSTRUCTIONS TO CANDIDATES

1. Check that this assessment booklet contains **10** questions printed on **17** pages numbered 2, 3, 4, 5, 6, 7, 8, 9, 10, 11, 12, 13, 14, 15, 16, 17 and 18.
2. Write your Index Number on the assessment booklet in the space provided above.
3. You should not use red, green or black ink in answering questions.
4. Write all your answers clearly in the assessment booklet.
5. Attempt **all** questions.

Question	Marking		Revision		Control	
	Marks	Sig	Marks	Sig	Marks	Sig
1						
2						
3						
4						
5						
6						
7						
8						
9						
10						
Total						
Sig (HoG)						

QUESTION 1 (18 marks)**Part A**

Circle the correct answer. Each item carries one mark.

1. In which continent is the river Nile found?
 - A** Africa
 - B** Asia
 - C** Australia
 - D** Europe

2. What is the longest line of latitude?
 - A** The Greenwich Meridian
 - B** The Tropic of Capricorn
 - C** The Equator
 - D** The Arctic Circle

3. Which of the following is the **oldest** relief feature of Mauritius?
 - A** Central Plateau
 - B** Plains
 - C** Central Ridge
 - D** Mountain ranges

4. The rearing of animals only is called
- A** mixed farming
 - B** pastoral farming
 - C** plantation agriculture
 - D** market gardening
5. One **physical** factor influencing farming is
- A** soil
 - B** labour
 - C** transport
 - D** location
6. We are in the year 2023. In which century are we?
- A** 20th century
 - B** 21st century
 - C** 22nd century
 - D** 23rd century
7. Where did the Dutch first land in Mauritius?
- A** Vieux Grand Port
 - B** Ferney
 - C** Mahebourg
 - D** Ile de la Passe

8. The island of Rodrigues was named by the

- A** Arabs
- B** Dutch
- C** French
- D** Portuguese

9. Manioc was brought to Mauritius from

- A** Brazil
- B** China
- C** East Indies
- D** Madagascar

10. Which village did Governor Decaen build?

- A** Cap Malheureux
- B** Flacq
- C** Mahebourg
- D** Souillac

[10]

M
R
HG
QC
CE

Part B

Write **True** or **False** after each statement.

1. The first Dutch settler to land in Rodrigues was Wolphart Harmensen.
2. Rodrigues is the smallest island of the Mascarene Islands.
3. Among the European explorers, the French were the first to arrive in the Indian Ocean.
4. Olivier Le Vasseur was a famous pirate.
5. The British defeated the French in the battle of Grand Port in August 1810.
6. The Mauritian Government has passed laws to protect the environment against different forms of pollution.
7. Most tropical cyclones are formed in the months of July and August.
8. The Queen of Britain was the Head of State of Mauritius from 1968 to 1992.

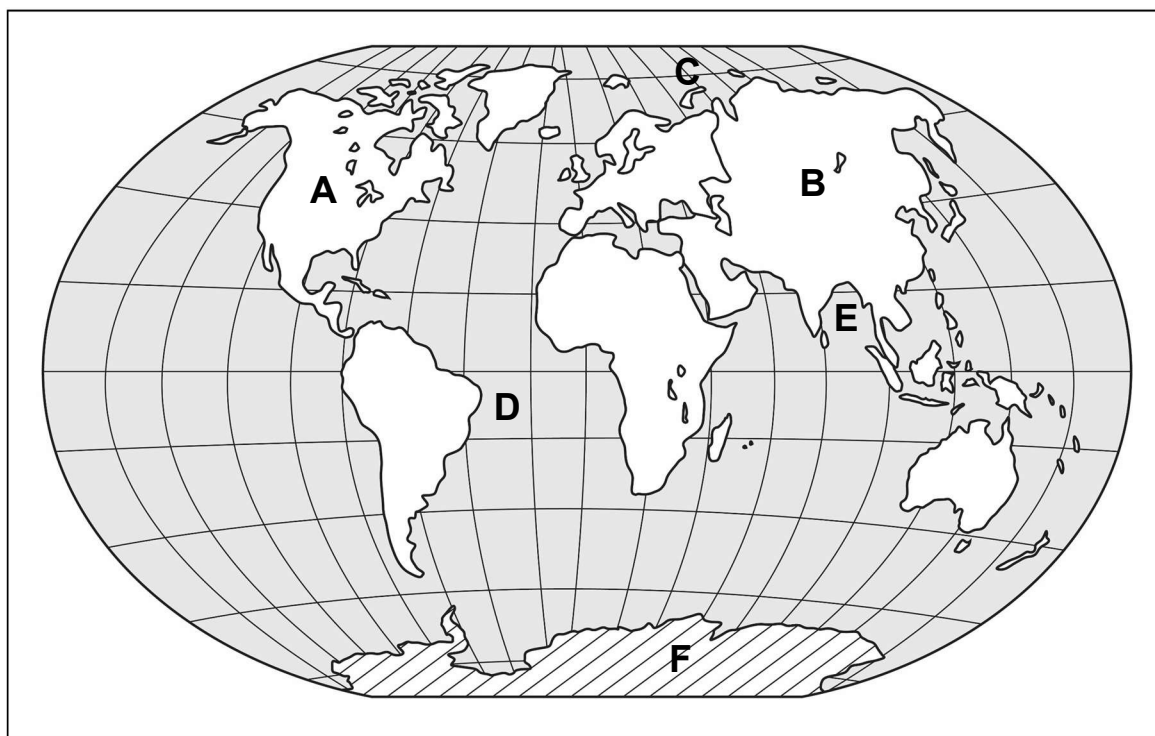
[8]

M
R
HG
QC
CE

QUESTION 2 (9 marks)

Study **Map 1** below. It shows the map of the world with continents and oceans.

Then answer the questions that follow.



Map 1

(a) Name

(i) Continent **A** : [1]

(ii) Continent **B** : [1]

(b) Name


(i) Ocean **C** : [1]

(ii) Ocean **D** : [1]

(c) Choose the correct answer.

(i) Sea **E** is the
(Mozambique Channel, Bay of Bengal). [1]

(ii) The Andes range of mountains is found in
(Australia, South America). [1]

- (iii) The river Mississippi is found in
(North America, Europe). [1]
- (iv) Which continent is furthest away from Mauritius?
..... (Asia, North America) [1]
- (d) The shaded region  F is the
(coolest, hottest) part of the Earth. [1]

M
R
HG
QC
CE

QUESTION 3 (10 marks)

Port Louis: From a harbour to a well-equipped port and capital city of Mauritius

1. (a) Tick (✓) the correct box.
Port Louis was chosen to be the port of Mauritius instead of Grand Port by the
Dutch ☐ French ☐ [1]
- (b) (i) Give one **disadvantage** that Grand Port had as a port.
.....
..... [2]
- (ii) Give one **advantage** that Port Louis had as a port.
.....
..... [2]
2. Apart from houses and roads, name **three** other developments that Mahé de Labourdonnais brought to Port Louis.
- (i)
(ii)
(iii) [3]

3. Explain why Port Louis is considered to be an important place in Mauritius today.

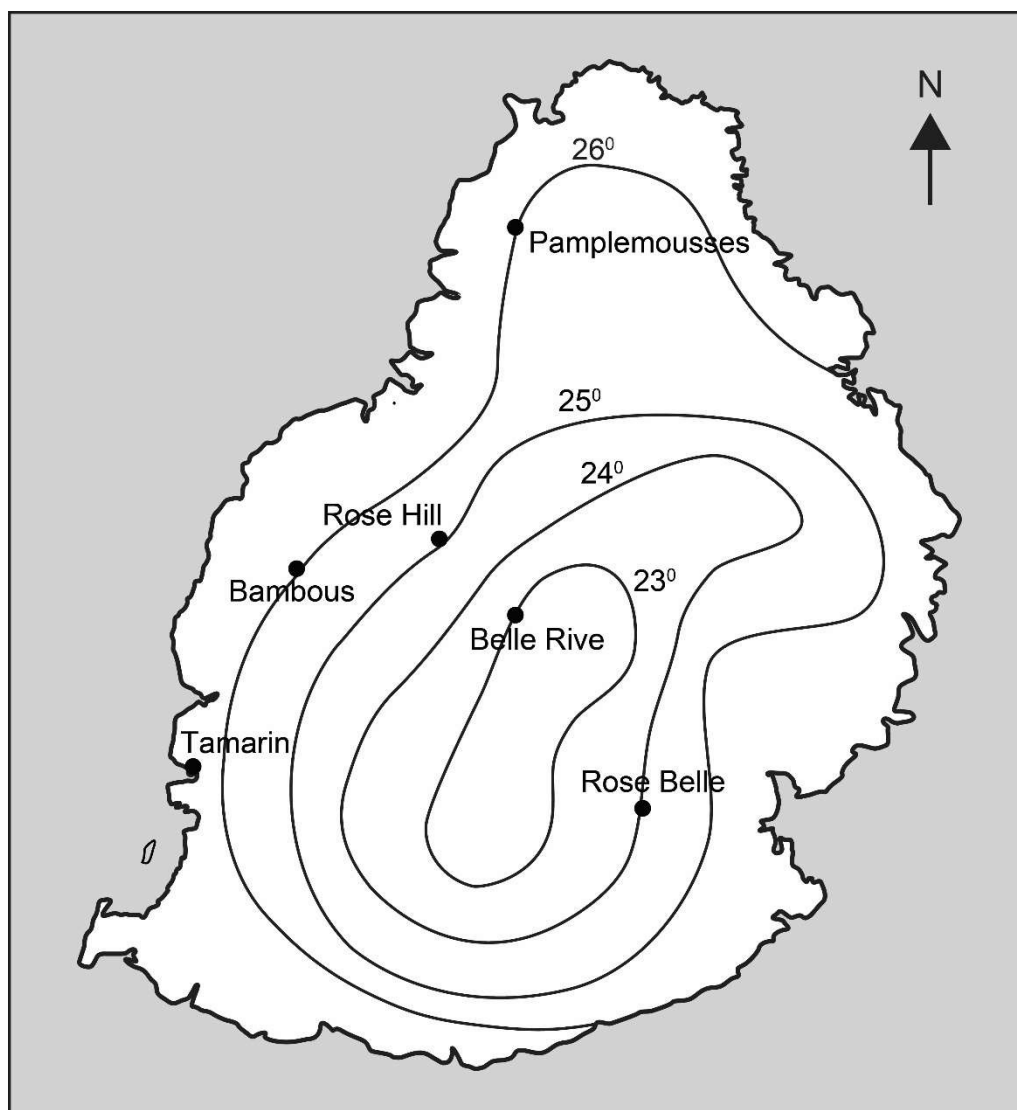
.....

..... [2]

QUESTION 4 (11 marks)

1. Study **Map 2** below carefully. It shows the average temperature for the month of January in Mauritius.


Then answer questions (a) and (b).



Map 2

M
R
HG
QC
CE

(a) (i) Lines joining all places having the same temperature are called [1]

(ii) On **Map 2**, shade like this  the area having an average temperature of less than 23° C. [1]

(b) (i) What is the average temperature at Pamplemousses?
..... ° C [1]

(ii) What is the average temperature at Belle Rive?
..... ° C [1]

(iii) Give one reason why the temperatures at Pamplemousses and Belle Rive are not the same.
.....
..... [2]

M
R
HG
QC
CE

2. Study **Diagram 1** carefully. It shows the average rainfall in Curepipe in a year. Then answer the questions below.

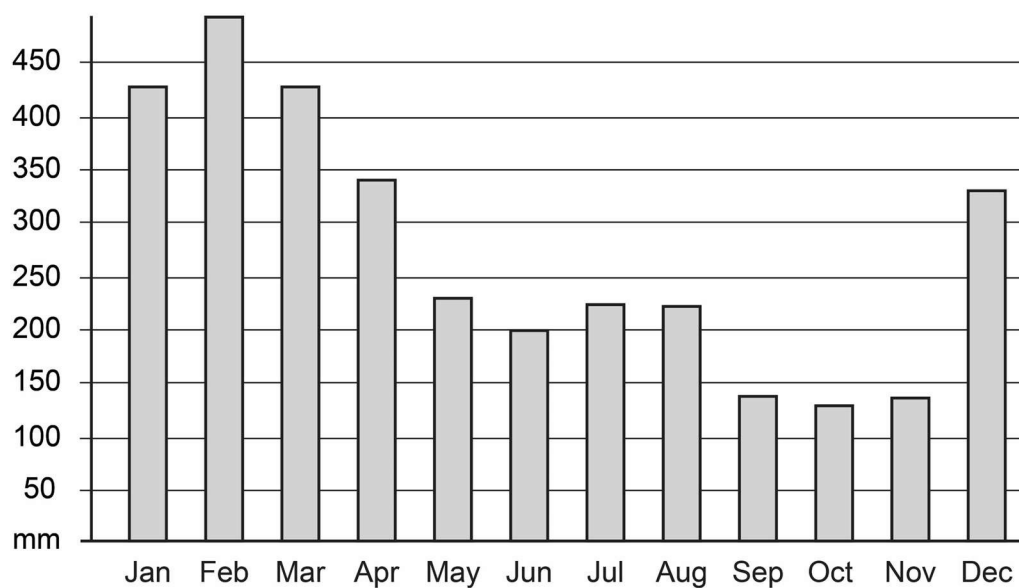


Diagram 1: Average rainfall in Curepipe

- (a) (i) Name the month with the highest amount of rainfall.

.....

[1]

- (ii) Name the month with the lowest amount of rainfall.

.....

[1]

- (b) How many millimetres of rain does Curepipe get in June?

..... **mm**

[1]

- (c) Give one reason why the amount of rainfall is not the same throughout the year.

.....

.....

[2]

M
R
HG
QC
CE

QUESTION 5 (8 marks)

(a) Choose the correct answer.

(i) In 1691, (**François Leguat, Robert Surcouf**) went to settle in Rodrigues with his friends. [1]

(ii) They settled near (**Plaine Corail, Port Mathurin**). [1]

(iii) They made arrack from (**sugar cane, latanier palms**). [1]

(iv) One bird that they saw was the (**Pink pigeon, Solitaire**). [1]

(b) Apart from making arrack, name **two** activities that the settlers did on the island.

(i)
(ii) [2]

(c) Give **one** reason why these settlers left Rodrigues.

.....
..... [2]

M
R
HG
QC
CE

QUESTION 6 (10 marks)

During the colonial period, slaves and indentured labourers were brought to Mauritius.

(a) Choose the correct answer.

(i) Slaves were brought to Mauritius by the
..... (Arabs, French, Portuguese).

(ii) Indian indentured labourers were brought to Mauritius by the
..... (British, French, Dutch).

[2]

(b) Slaves were not free.

Give **two** examples to show that they were **not** free.

(i)
.....

(ii)
.....

[4]

(c) (i) Give one reason why Indian indentured labourers were brought to Mauritius.

.....
.....

[2]

(ii) What was the duration of their contract?

.....

[1]

(iii) How much money were they paid monthly for their work?

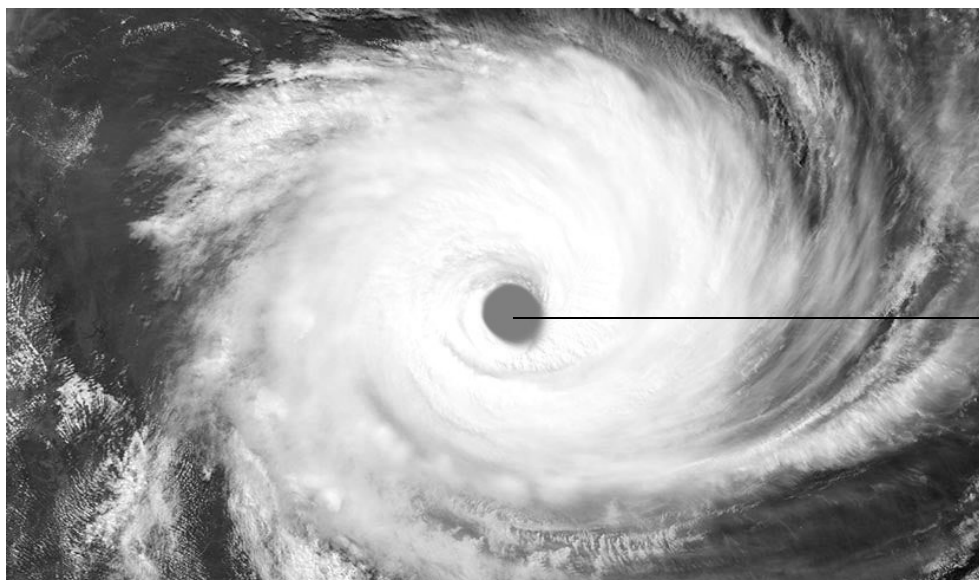
.....

[1]

M
R
HG
QC
CE

QUESTION 7 (10 marks)

Natural hazards affect people and the environment.



Eye

Picture 1: Satellite picture of a cyclone

(a) Give **two** types of weather conditions associated with the eye of a tropical cyclone.

(i)

(ii) [2]

(b) Give one reason why Mauritius has been experiencing flash floods in recent years.

.....

..... [2]

(c) What causes earthquakes to occur?

.....

..... [2]

- (d) (i) Volcanic eruptions emit ash. One such eruption occurred in Iceland in 2010 and thousands of flights were cancelled.

Suggest one reason why flights were cancelled.

.....
 [2]

- (ii) Although volcanoes are hazards, they also have advantages.
 Give two advantages of volcanoes.

1.

 2.
 [2]

M
R
HG
QC
CE

QUESTION 8 (8 marks)**Health and Education in the past**

- (a) (i) Name one disease that killed many people in the 19th century.

..... [1]

- (ii) Give one reason why there were various diseases in the past.

.....
 [2]

- (iii) Give one measure that was taken to provide health facilities to the people.

..... [1]

- (iv) Many people left Port Louis because of diseases.
 Where did they go to settle?

..... [1]

- (b) (i) During the French period, few children could go to school.
 Give one reason why.

.....
 [2]

- (ii) **Choose the correct answer.**

One person who built schools in Port Louis and in villages was

.....
(Reverend Jean Lebrun, Sir Robert Farquhar). [1]

M
R
HG
QC
CE

QUESTION 9 (8 marks)

- (a) Independence Day and Republic Day are celebrated on the 12th of March.

This celebration is known as Day. [1]

- (b) **Figure 1** below shows the Coat of Arms of Mauritius. Study it carefully and answer the questions that follow.



Figure 1: Coat of Arms of Mauritius

- (i) Name the bird found on the Coat of Arms of Mauritius.

..... [1]

- (ii) What does 'Stella Clavisque Maris Indici' mean?

.....
 [2]

- (iii) The sugar cane crop is shown on the Coat of Arms.
 Give one reason why.

.....
 [2]

(c) Our National Flag has four colours.
Which colour represents

(i) the abundant vegetation? colour [1]

(ii) the Indian Ocean? colour [1]

M
R
HG
QC
CE

QUESTION 10 (8 marks)

Picture 2 below shows a monument found at Poudre d'Or.



Picture 2: Monument at Poudre d'Or

(a) (i) Name the monument in **Picture 2**.

..... [1]

(ii) What does this monument commemorate?

.....
..... [2]

(b) **Picture 3** below shows the Fort Frederik Hendrik Museum.



Picture 3: Fort Frederik Hendrik Museum

(i) Where is this museum situated?

..... [1]

(ii) What story does this museum tell us?

.....
..... [2]

(c) From the list of places provided below, select **two** places of historical interest in Rodrigues:

Port Mathurin marketplace

Marragon's Tomb

St Gabriel Church

Plaine Corail airport

(i)

(ii) [2]

M
R
HG
QC
CE

BLANK PAGE

BLANK PAGE