



Index Number:

NATIONAL CERTIFICATE OF EDUCATION

March / April 2021

TECHNOLOGY STUDIES (N550) Component 2

TIME: 1 HOUR 15 MINUTES

Candidates answer on the Question Paper.

INSTRUCTIONS TO CANDIDATES

1. Write your index number in the space provided above.
2. Use black or blue ink. HB pencils may be used for the diagrams/sketches only.
3. Read each question carefully. All answers must be written in the spaces provided.
4. Do not use correction fluid.
5. This document consists of **10** questions printed on **8** pages.
6. Answer **ALL** questions.
7. The total mark for Component 2 is **50**.
8. The number of marks is given in the brackets () for each question or part question.

For Examiners' use												
Question No.	1	2	3	4	5	6	7	8	9	10	Total	Signature
Marker												
Team Leader												
Quality Controller												
CE/ACE												

SECTION A

Question 1 (6 marks)

Circle the correct answer. An example is given below.

Example: Prêt- à-Porter clothing are produced in

- | | |
|--|--------------------|
| <input checked="" type="radio"/> A bulk | B one-off |
| C batches | D flow line |

(a) The narrow finished edge of a woven fabric is known as a

- | | |
|-------------------|---------------|
| A warp | B weft |
| C selvedge | D yarn |

(b) One of the basic elements of fashion design is

- | | |
|-----------------|---------------|
| A colour | B size |
| C style | D cost |

(c) The should be lowered before starting to stitch.

- | | |
|-------------------------|----------------------------|
| A bobbin winder | B presser foot |
| C thread take-up | D tension regulator |

(d) The stitching shown in **Figure 1** is known as a stitch.

- | | |
|------------------|------------------|
| A loop | B zig-zag |
| C tacking | D hemming |

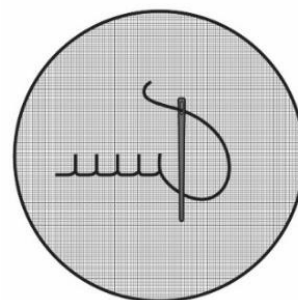


Figure 1

(e) The silhouette illustrated in **Figure 2** is known as

- A** triangular **B** wedge
C tubular **D** A-line

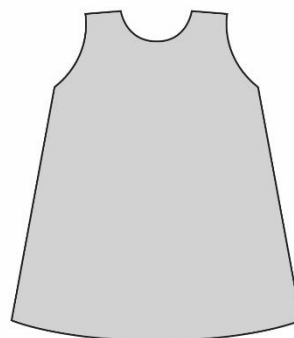


Figure 2

(f) Knitted fabrics are when worn.

- A** rough **B** warm
C shiny **D** uncomfortable

Question 2 (4 marks)

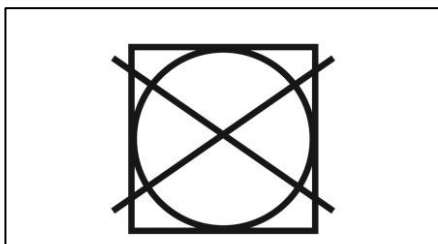
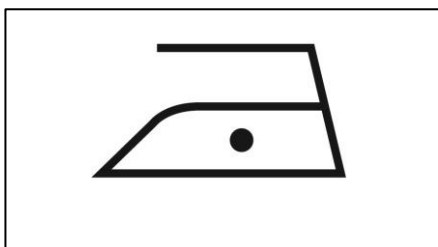
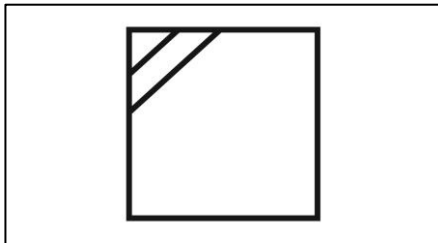
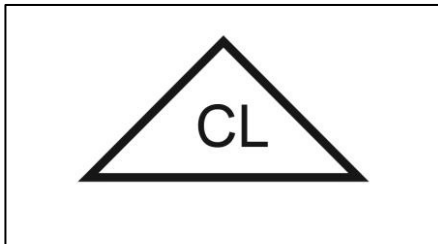
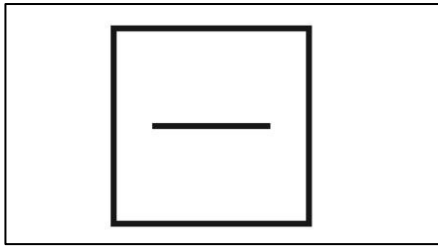
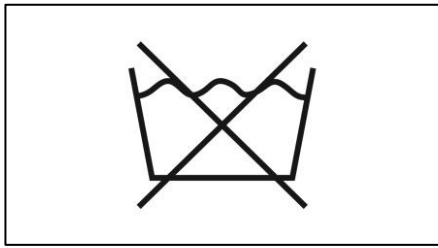
Put a tick (✓) in the appropriate box to indicate whether the statement is **TRUE** or **FALSE**. An example is given.

STATEMENT		TRUE	FALSE
Example: Vitamins are essential nutrients that help the body to fight infections.		✓	
a.	Fat soluble vitamins are stored under the skin.		
b.	Vitamin D prevents the growth of strong bones and teeth.		
c.	Citrus fruits are good sources of vitamin C.		
d.	Goitre is due to lack of Iron in the body.		

QUESTION 3 (5 marks)

Match the care symbols shown in **Column A** to their corresponding descriptions in **Column B**.

Column A



Column B

- Dry flat
- Dry in the shade
- Do not tumble dry
- Do not wash
- Tumble drying
- Use chlorine bleach
- Iron at low temperature

Question 4 (5 marks)

Complete the table below by naming the method of cooking. An example has been provided.

Definition		Method
Example: Cooking food in a hot oven with little fat		Roasting
a.	Cooking food in water at 100° C	
b.	Cooking food in hot oven	
c.	Cooking food in hot oil	
d.	Cooking food using intense heat	
e.	Cooking food in water vapour	

Question 5 (4 marks)

Fill in the blanks with the correct word from the list given below. One example has been done for you.

consumption	values	laziness
respect	eco-friendly	obsessive

Example: One way to build strong family relationships is to respect each other.

- (a) Addiction to technology involves the use of mobile devices.
- (b) One of the negative impacts of technology on family life is
- (c) When going shopping, always carry bags with you.
- (d) Sustainable food production and practices help to save energy, water and protect the environment.

Please turn over this page

SECTION B

Question 6 (5 marks)

It is important to develop healthy food habits and food choices.

- (a) Name **three** Non-Communicable Diseases (NCDs) which may result due to unhealthy food habits.

(i)

.....

(ii)

.....

(iii)

.....

(3 marks)

- (b) Eating out in fast food outlets is very popular among adolescents.

State **two** factors that adolescents need to consider to ensure that the food is safe when eating out.

(i)

.....

(ii)

.....

(2 marks)

Question 7 (4 marks)

Different types of convenience foods are used to prepare meals.

(a) Give **two** examples of convenience foods.

(i)

(ii)

(2 marks)

(b) State **one** advantage and **one** disadvantage of using convenience foods.

Advantage:

Disadvantage:

(2 marks)

Question 8 (6 marks)

All living things need water to stay alive.

(a) State **two** importance of water in the diet of living things.

(i)

(ii)

(2 marks)

(b) List **two** symptoms of dehydration.

(i)

(ii)

(2 marks)

Please turn over this page

(c) Give **two** ways to avoid dehydration.

(i)

(ii)

(2 marks)

Question 9 (4 marks)

(a) Kevlar is a modern fabric used to make parachutes. List **two** properties of Kevlar that make it suitable for making parachutes.

(i)

.....

(ii)

.....

(2 marks)

(b) Give **two** uses of reflective textiles.

(i)

.....

(iii)

.....

(2 marks)

Question 10 (7 marks)

(a) **Figure 3** shows an electric sewing machine. Label parts **A**, **B**, **C** and **D**.

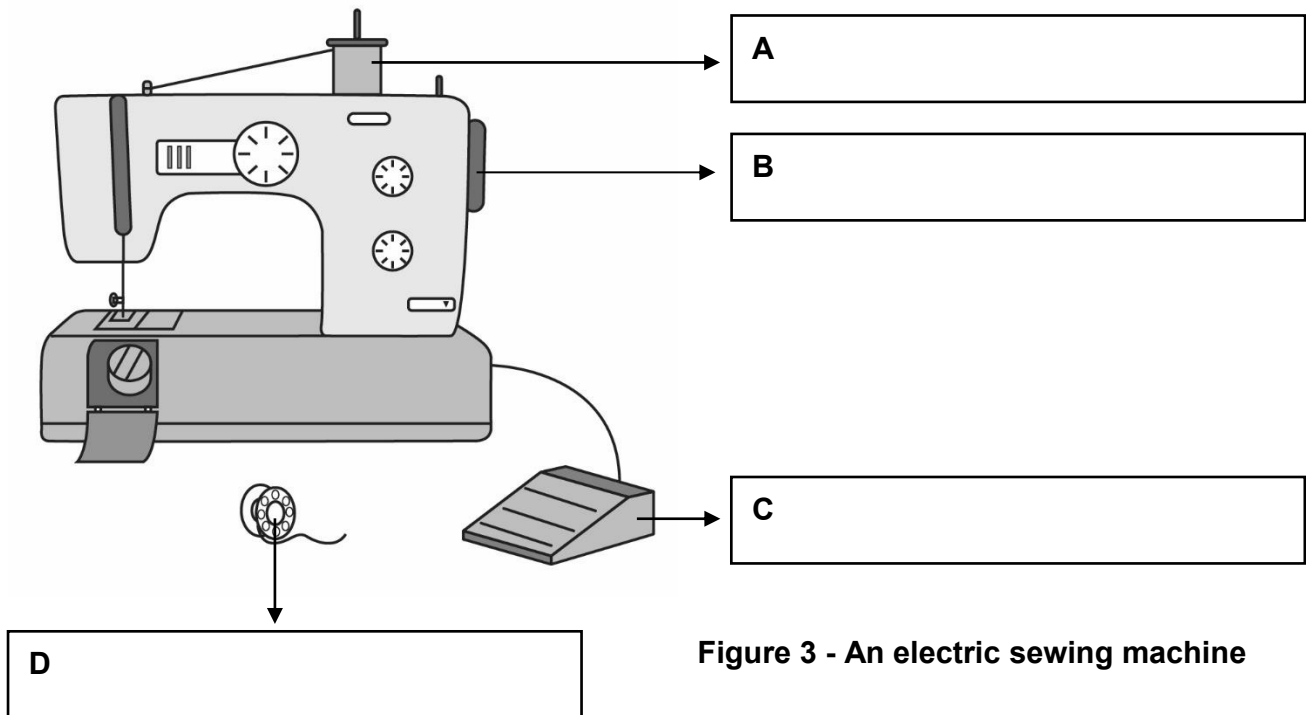


Figure 3 - An electric sewing machine

(4 marks)

(b) Give **three** safety precautions that you should observe when using an electric sewing machine.

- (i)
-
- (ii)
-
- (iii)
-

(3 marks)

Blank Page

Blank Page

