



Index Number:

NATIONAL CERTIFICATE OF EDUCATION

March / April 2021

ART & DESIGN (N580)

Component 2

TIME: 30 MINUTES

Candidates answer on the Question Paper.

INSTRUCTIONS TO CANDIDATES

1. Write your index number in the space provided above.
2. Answer **ALL** questions.
3. Write in dark blue or black ink.
4. Do not use correction fluid.
5. This document consists of **3** questions printed on **3** pages.
6. Any discrepancy in the document must be immediately notified to the invigilator.
7. The number of marks is given in brackets [] at the end of each question or part question.
8. The total of the marks for this paper is **20**.

For Examiners' use					
Question No.	1	2	3	Total	Signature
Marker					
Team Leader					
Quality Controller					
CE/ACE					

Section A

1. Indicate if the following statements are **TRUE** or **FALSE** by ticking (✓) the correct box. The first one has been done for you.

STATEMENT		TRUE	FALSE
Example: The Greeks excelled in the realistic depiction of human figures in their artworks.		✓	
a.	Blue is a warm colour.		
b.	Pop Art artists have a common interest in painting landscapes.		
c.	Claude Monet is an artist associated with the High Renaissance period.		
d.	Impressionist artists used small brushstrokes of pure colours in their painting.		

(4 marks)

2. Fill in the blank with the correct word from the list given. An example has been provided.

Michelangelo, expressionist, collage, Picasso, batik, gouache

Example: Expressionist artists have an emotional and spiritual vision of the world.

- (a) An artist who was a pioneer in using mixed media was
- (b) In, various materials are glued onto a surface to form an artwork.
- (c) A well-known artist from the Renaissance period is
- (d) In, melted wax is applied to areas that need to remain white.

(4 marks)

Section B

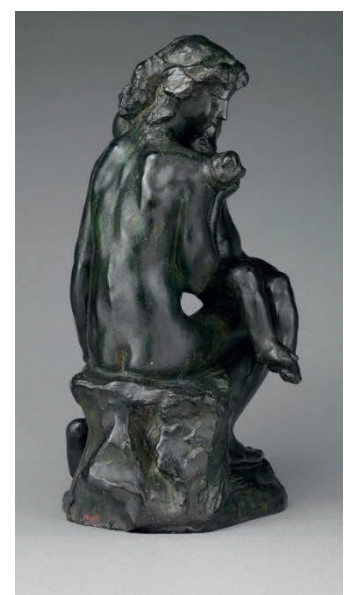
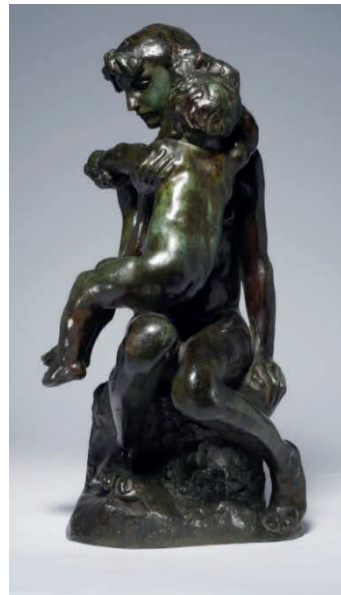
Choose either Artwork 1 or Artwork 2.
Tick the Artwork chosen.

Artwork 1

☐

Camille Pissaro, *The Harvest*, 1882, Oil on canvas
Dimension: 70.3 x 126 cm

Artwork 2

☐

Artwork from different angles
Auguste Rodin, *Brother and Sister*, 1903
Bronze
Dimension: 15 x 8½ x 8 inches

3. Answer the following questions based on the chosen Artwork.

- (a) According to you, what did the artist want to express through the Artwork? Elaborate on any **one** idea.

(3 marks)

- (b) Describe how **one art element** and **one principle of design** have been used by the artist to communicate his/her idea.

(4 marks)

- (c) Use appropriate art terms to describe what you like or do not like about the Artwork.

(5 marks)

BLANK PAGE

BLANK PAGE

BLANK PAGE